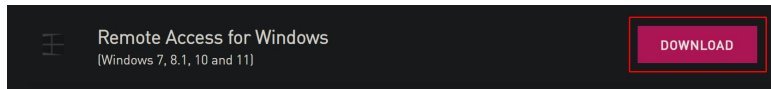
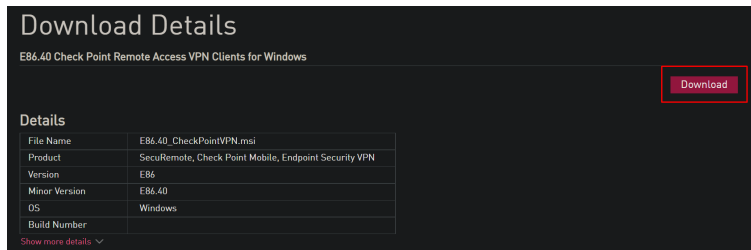


VPN installi juhend

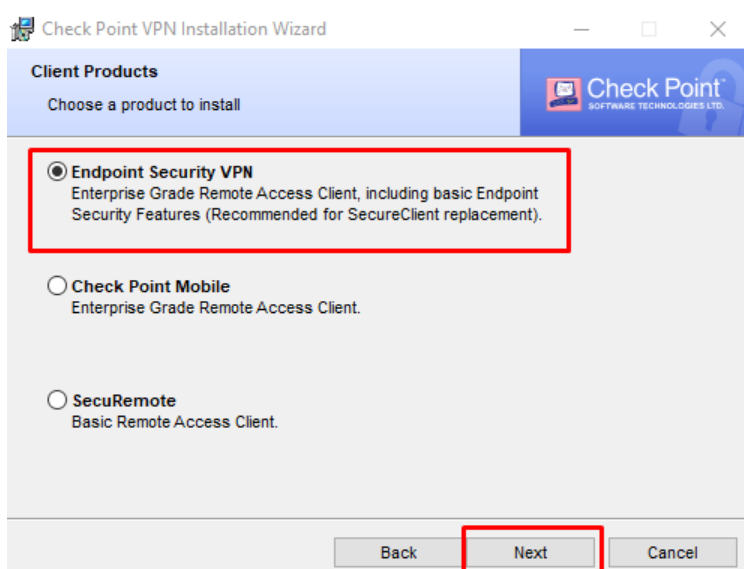
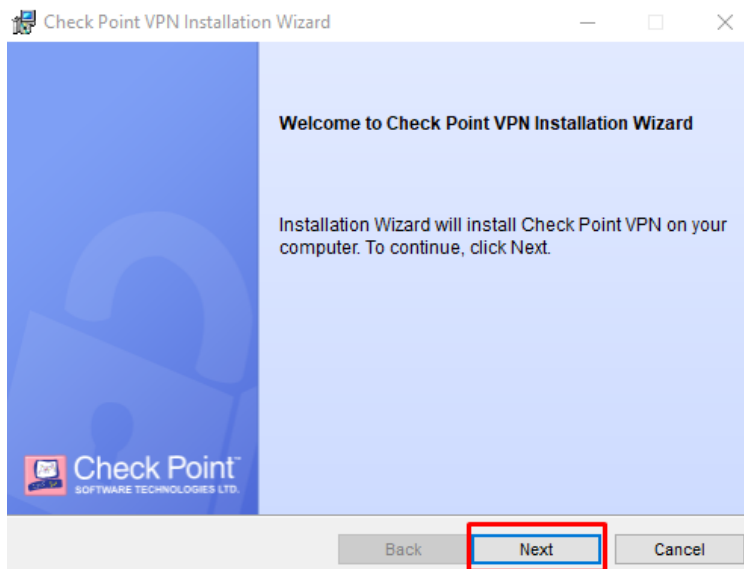
1. Ava <https://www.checkpoint.com/quantum/remote-access-vpn/> ja vajuta „Download“

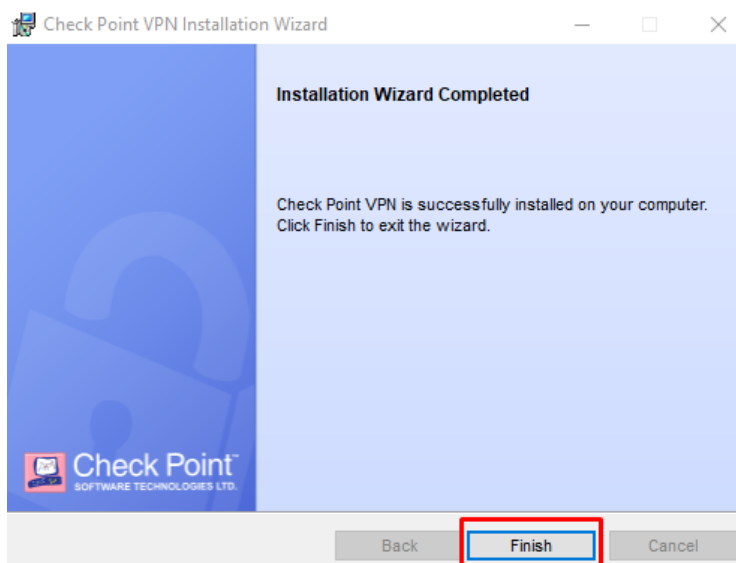
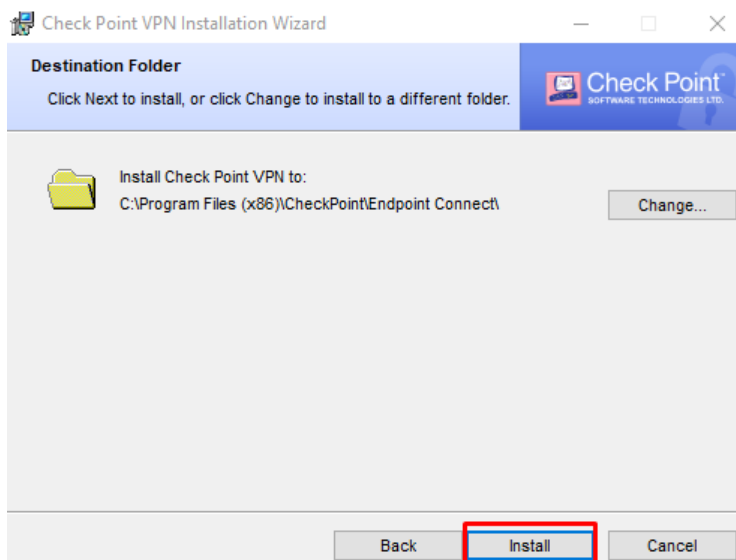


2. Vali esimene „Download“ valik:

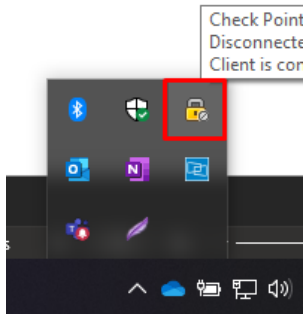


3. Käivita allalaetud CheckpointVPN.msi

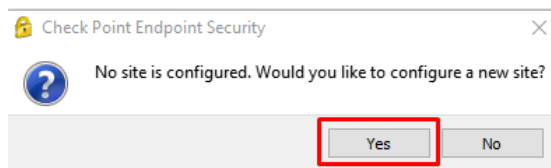




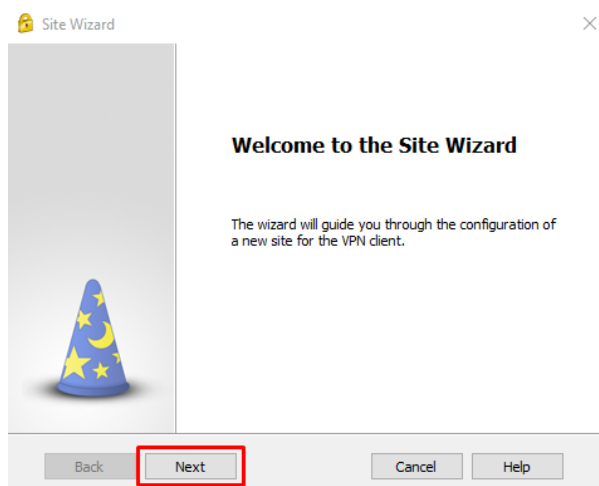
4. All paremal tekkis nüüd „Tabaluku“ ikoon



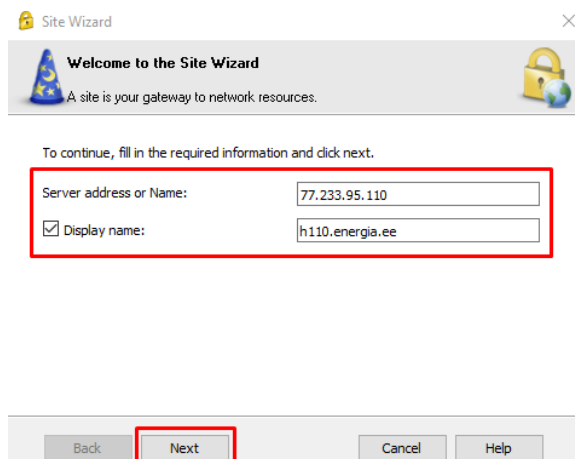
5. Tee ikoonil paremkliik ja vali „Connect“



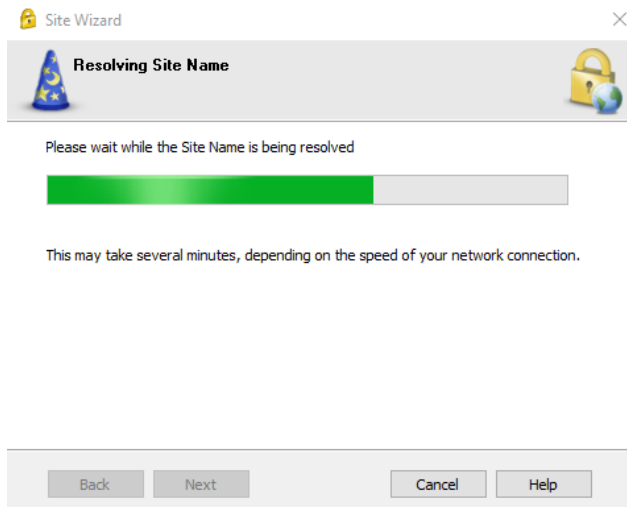
6. Next



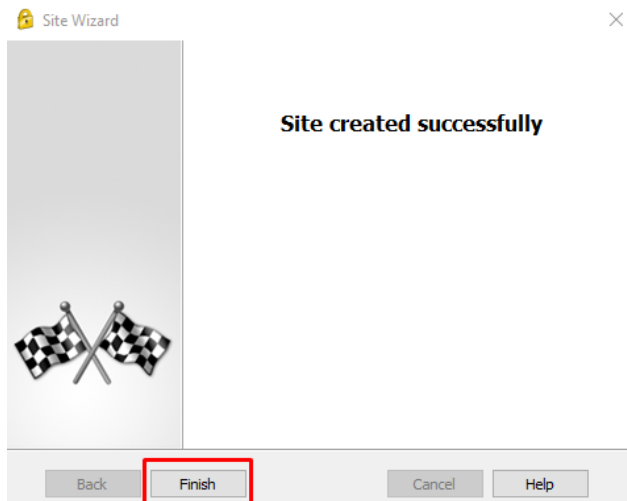
7. Lisa serveri address ja „Display Name“
Server address or name: 77.233.95.110
Valida linnuke „Display Name“: h110.energia.ee



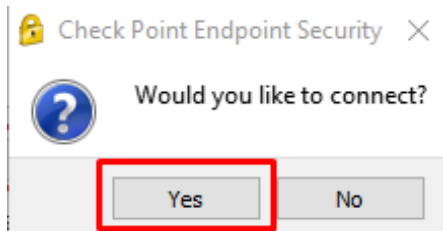
Algab VPN seadistamine:



8. Finish



9. Ühenduse loomine



10. Logi enda kasutajakontoga sisse. Kasutajanimi peab olema **eesnimi.perenimi**

Check Point Endpoint Security

Endpoint Security

Check Point SOFTWARE TECHNOLOGIES LTD.

Site: h110.energia.ee

Authentication

Additional authentication is required. Please provide password to authenticate

Username: ees.parenimi

Password: ●●●●●●

Connect Cancel Help

Selected Login Option: MFA [Change Login Option Settings](#)

11. Kui VPN annab heli ja näitab rohelist märki, olete VPNi sisselogitud ja saate Eesti Energia rakendusi kasutada:

Check Point Endpoint Security

Endpoint Security

Check Point SOFTWARE TECHNOLOGIES LTD.

No security policy is configured.

Status	VPN	Active site is h110.energia.ee	Connected
VPN	Compliance		Off
Compliance	Firewall	Firewall policy is Enabled	Enabled

Tools